

Using The Float Gauge



35mm

Code No.
500 001



STEP 1

Determine the type of cell opening the battery has

**35mm opening,
or
Bayonet & Thread opening**

STEP 2

Fold the end of the gauge. This is important since it will prevent the gauge from slipping between the plates which would give faulty measurements

STEP 3

Insert the end of the gauge matching into the cell opening.
Lower it gently until touches the plates.
Read the Float No. and Colour.

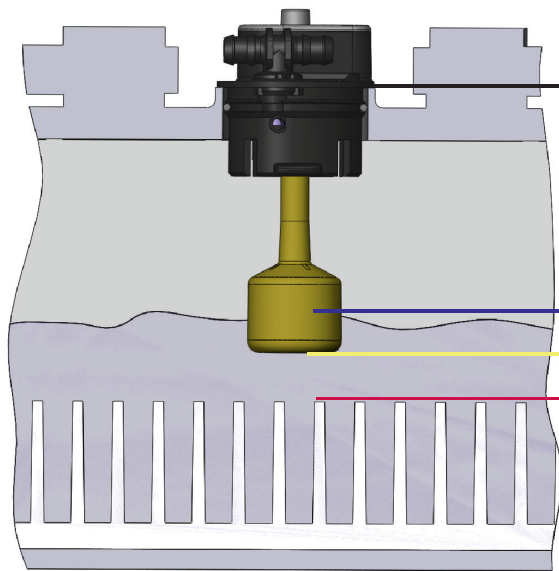
Read the Float Number

It is recommended to measure two battery cells. In case of variations in the result or in case the reading is in between two Float numbers use the lowest number.
Rinse the gauge with clean water to remove any acid that could be on it.

- Bayonet 1/4 turn
- Bayonet 1/8 turn
- Clip-In 24 mm
- Thread M21-M30

- WASH YOUR Hands
- NOTE : It is the Customer's responsibility to determine the correct Float Length or Size

Float



A = Elektrolyte Level

The final distance between the electrolyte level and the cell opening after fill cap stops inflow of water

B= Float Length

The distance between the bottom of the fill cap washer and the bottom of the float

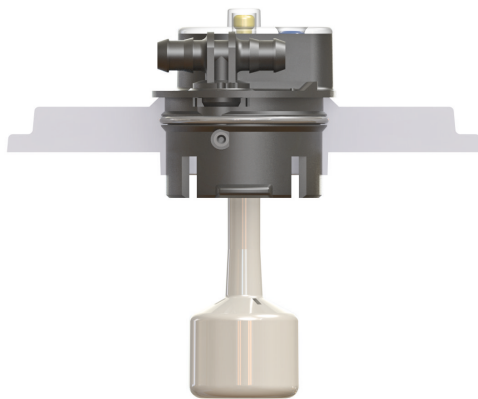
C= min required Distance between cell opening and plates

The minimum distance that must exist between the battery cell opening and its plates or moss shield is the „FLOAT LENGTH+safety distance

Most batteries have an Elektrolyt Minimum Level of 3mm above the Plates and a Maximum Level of 31 mm measured from the Rim of the Vent Opening.

We recommend keeping the Elektrolyt Level below its specified Maximum to avoid the risk of overflowing.

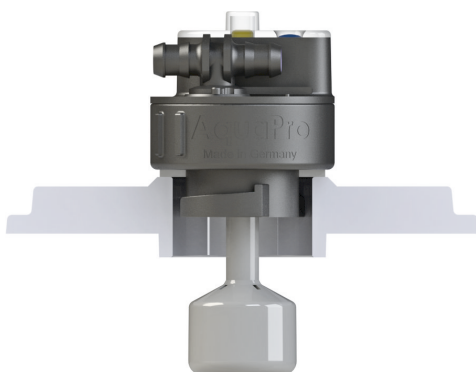
The clearance between the bottom of the Float and the Plates has to be at least 5mm



Measurements table

Fill Cap push in 35 mm

Length & No.	44	48	52	56	60	66	71	75
A	31	35	39	43	47	53	58	62
B	44	48	52	56	60	66	71	75
C	49	53	57	61	65	71	76	80



Measurements table

Fill Cap with Adapter

1/4 Turn (bayonet)

1/8Turn (bayonet)

Clip-in (bayonet) M21-M30 Thread

Length & No.	44	48	52	56	60	66	71	75
A	15	19	23	27	31	37	42	46
B	28	32	36	40	44	50	55	59
C	33	37	41	45	49	55	60	64